



# DOT Federal Railroad Administration

## Rail Crossing Locator – User Guide

---

### User Guide Features

This user guide provides an overview and helpful features of the Rail Crossing Locator application.

### System Overview

The Rail Crossing Locator application allows users to identify and view detailed information about railroad crossing using an interactive map. Users can search by location, crossing ID, or address and access key attributes, inventory and related reports.





# DOT Federal Railroad Administration

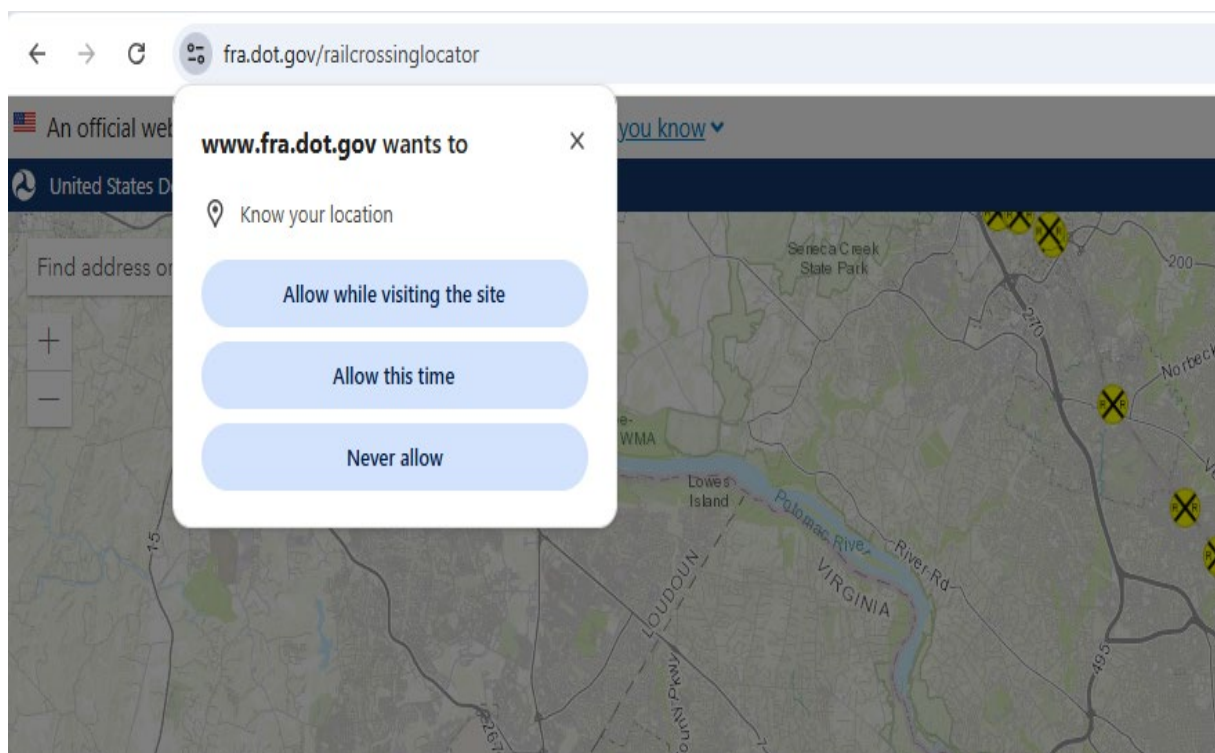
## Rail Crossing Locator – User Guide

### Accessing Rail Crossing Locator Site.

- Open a web browser.
- Navigate to: <https://www.fra.dot.gov/railcrossinglocator>
- The application will load and display the interactive map interface.

### Location

- Upon initial access, the application will prompt you to grant location permissions.
- Select Allow to enable location services.
- Once permissions are granted, refresh the page.
- The map will automatically center on your current location.



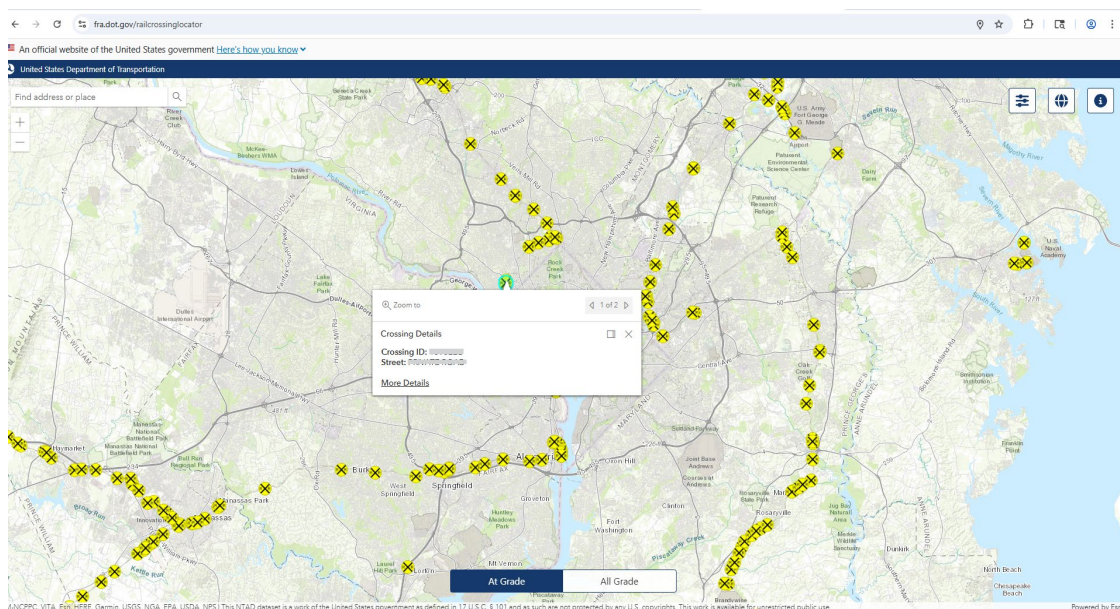


# DOT Federal Railroad Administration

## Rail Crossing Locator – User Guide

### Selecting a Rail Crossing

- Use the map to locate a railroad crossing.
- Click on a crossing marker.
- The following information will be displayed:
  1. Crossing ID
  2. Street Name



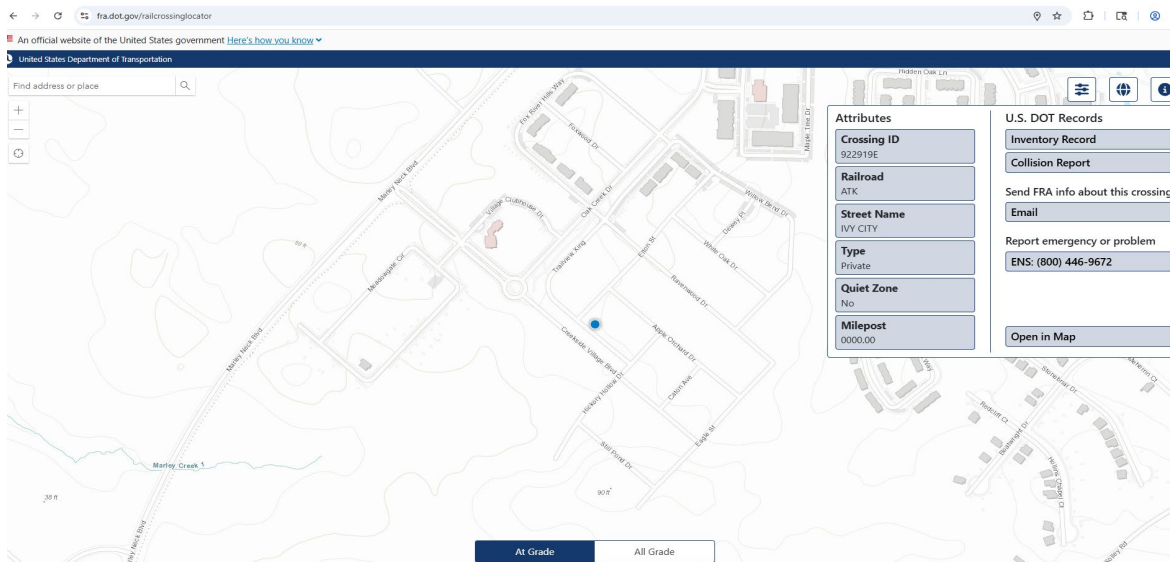
# DOT Federal Railroad Administration

## Rail Crossing Locator – User Guide



### Viewing Crossing Details

- After selecting a crossing, click More Details.
- The details panel provides access to:
  1. Crossing attributes
  2. Inventory records
  3. Collision reports (if available)
  4. Contact email address and phone number



### Search Functionality

- Use the Search bar to find crossings by:
  1. Crossing ID
  2. Address
  3. Location

### Filtering

- Use the At Grade / All Grade toggle at the bottom of the screen to filter crossings displayed on the map.



U.S. Department of Transportation  
**Federal Railroad Administration**



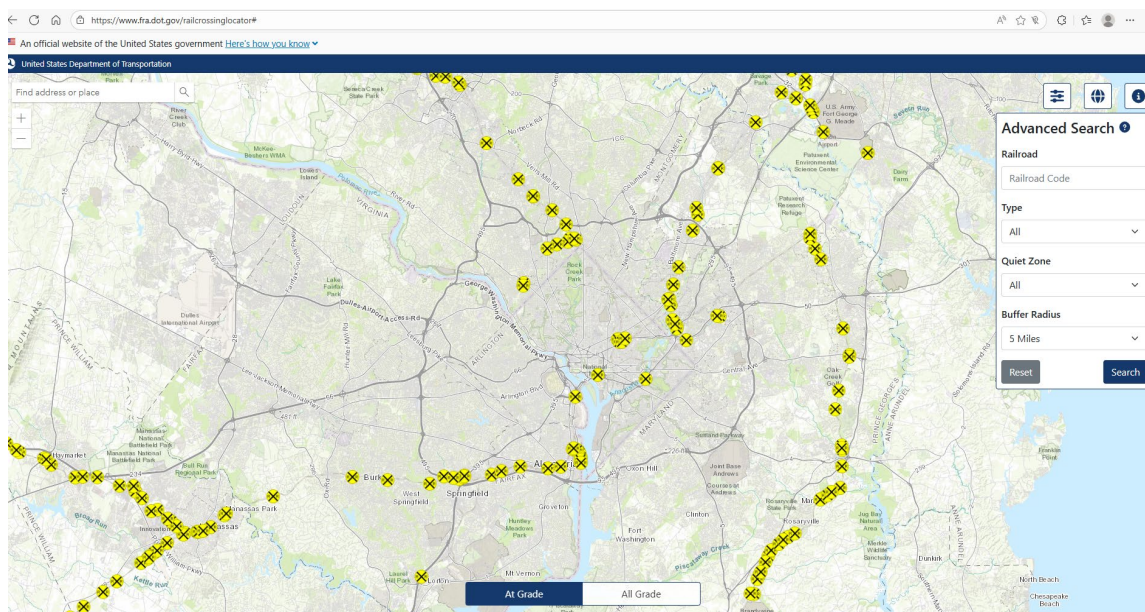
# DOT Federal Railroad Administration

## Rail Crossing Locator – User Guide



### Advanced Search

- Select Advanced Search to apply additional filters, including:
  1. Railroad
  2. Crossing type
  3. Quiet Zone status
  4. Buffer radius



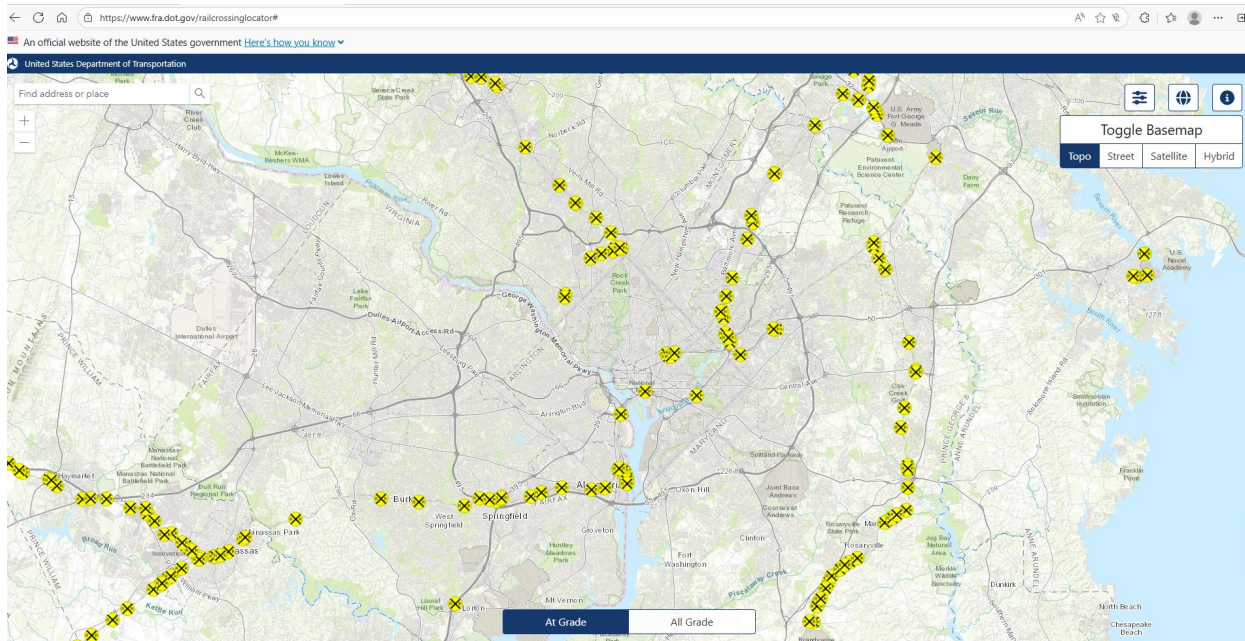
# DOT Federal Railroad Administration

## Rail Crossing Locator – User Guide



### Basemap Toggle

Use the Basemap Toggle to switch the currently selected basemap.



U.S. Department of Transportation  
Federal Railroad Administration



### Common Issues and Frequently Asked Questions (FAQ)

#### 1. The spinning circle on page load never disappears

If the loading spinner continues to display and the application does not fully load, please refresh the page. In most cases, this resolves the issue.

#### 2. How do I navigate to my current location?

If you have granted location permissions to the site, the application will automatically center the map on your current location when the page loads.

Alternatively:

- Select the Search bar.
- Choose Use current location from the dropdown options.

#### 3. How do I open a rail crossing in my Maps application?

- Select a crossing on the map.
- Click More Details.
- Scroll down within the attributes panel.
- Select Open in Map to launch the location.

